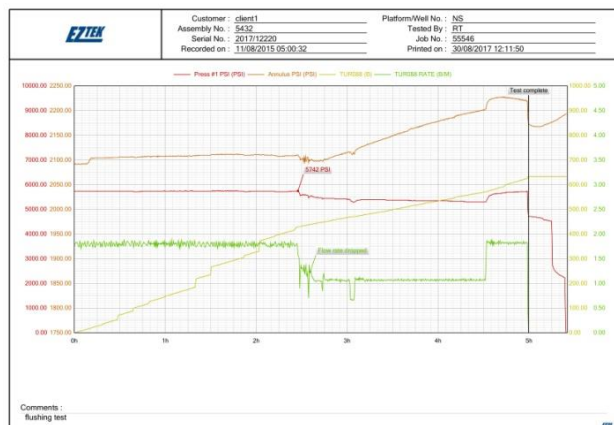


The Zone 2 ATEX - TallyBook Wireline Pro is Eztek's next generation wireline digital data collection logger.



Benefits:

Our aim when designing the TWP was to give personnel at the worksite more data visibility while carrying out their well servicing programs, from rig up to rig down. The unit captures all job data digitally so critical information can be called on at any time and informed decisions can be made. ***Imagine no more chart recorders!***

Typical Applications:

Well Servicing Operations –

Slickline Operations; E-line operations; Pre-job PCE testing; Wellhead testing (WHM); SSSV Integrity testing; Post-job reporting

Features:

- Warning alarms: Critical zone warning; tubing hangar warning; WEG warning
- Wire Stretch Function built-in
- Warrior interface
- Calculator
- Job Event Log
- Multi-level password administration
- Zone 2 flash drive data transfer
- Multitasking graph/plot generation
- Onscreen real-time display with measurement select options: depth and speed (ft or metre); tension (lbs or kg); THP (psi, bar or kpa); CHP (psi, bar or kpa); SSSV display (psi, bar or kpa)
- Onscreen well information uplift to graph
- Battery, mains or power-pack powered
- Fits on any winch
- Slickline or E-line wire type select function from library
- Allows you to install client's SOP working limits, max tension, max speed, with visual and audible alarms when SOPs exceeded. Shutdown option available.

Improve efficiency.
Increase safety.
Reduce costs.

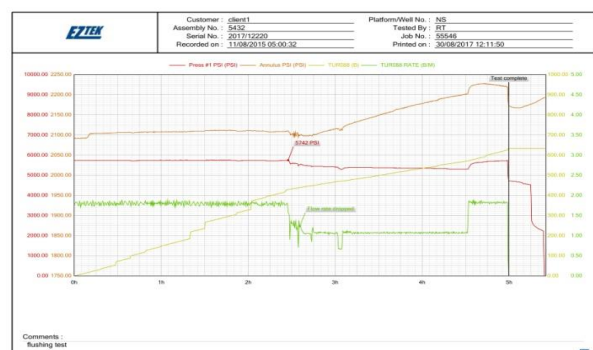
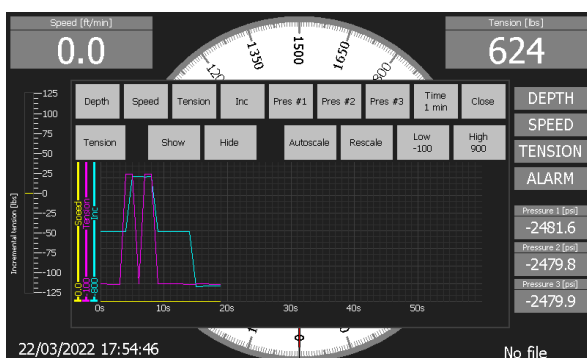
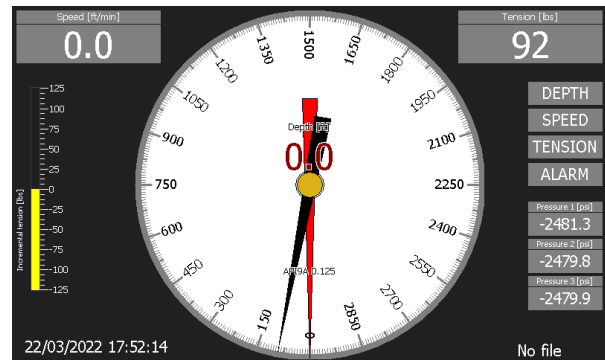
Basic operation:

Fast Start

- Power ON
- Select RECORD and logging commences
- Click STOP, then confirm – logging is automatically saved
- Download to USB stick to automatically generate report with TallyView Software on standard PC/laptop
- Convert to CSV
- Power OFF

Primary Start

- Power ON
- Select wire or cable size and type
- Select unit of measurement
- Set depth alarm points
- Select RECORD and logging commences
- Click STOP, then confirm – logging is automatically saved
- Download to USB stick to automatically generate report with TallyView Software on standard PC/laptop
- Convert to CSV
- Power OFF

Improve efficiency.
Increase safety.
Reduce costs.

Specifications	Standard	Options
Computer	256MB RAM Memory for 1 year of data recording (when at 1 sample per second) Internal safety barriers Software based on Windows CE platform	N/A
Enclosure	Die-cast aluminium IP65, ATEX Zone 2 rated 230 x 330 x 110mm (7" screen version) Weight approximately 9kg 0° to +50° C operating temperature	Front mounted handles for portability
Display screen	TFT touch screen, 280 cd/m2 brightness 800 x 480 resolution Real-time graph and digital display	10.1" or 7.0"
Power Supply	24 VDC Supply Voltage (less than 2 Amps at 12 VDC)	Main, or battery operated
Controls	Illuminated piezo switch (Power On/Off) Onscreen QWERTY keyboard	N/A
Ports	Power supply/ Charger port Transducer connection ports USB Type 'A' port for data download	Zone 2 USB Port for download in haz area
Electronic interface	Inputs/outputs determined by client Inputs calibrated to national standards Sample rate of 1Hz	<i>Call to discuss sample rate options</i>
Software for PC	TallyView – open data recorded on TallyBook to add test details, time, comments, amend graph review, adjust scale, and print test reports with client logo. <ul style="list-style-type: none"> • Latest software includes: • Optional curve filter • Add comments to report • Add comments to graphical curves • Create curve parameter templates which include pre-set curve names, scales and enable/disable curve display options 	

www.eztekglobal.com

Improve efficiency.
Increase safety.
Reduce costs.

Rev. 1

